

e.module L5.1

Firmware update

Instruction Manual

TABLE OF CONTENTS

1	Firmware update	1
1.1	Required Equipment	1
1.2	Installation of drivers for PEAK-System.....	1
1.3	Module preparation	1
1.4	Connection to the module.....	2
1.5	Executing a firmware update	4

1 Firmware update

1.1 Required Equipment

Equipment needed for firmware upgrade:

- PCAN SET (PEAK-System PCAN-USB adapter + cable); TAB Nr.: 1026937
- PEAK-System drivers
- TabBmsGui (Software)
- latest firmware version

1.2 Installation of drivers for PEAK-System

Before using PCAN SET, it is necessary to download and install the drivers. You can download them from the website:

<https://www.peak-system.com/Drivers.523.0.html?&L=1>

1.3 Module preparation

NOTE: The firmware upgrade can only be done on each module separately.

If there are communication connections between several modules, they must be disconnected.

NOTE: On each module, DIP4 on the DIP switch must be 1, the others must be 0.

DIP1: 0

DIP2: 0

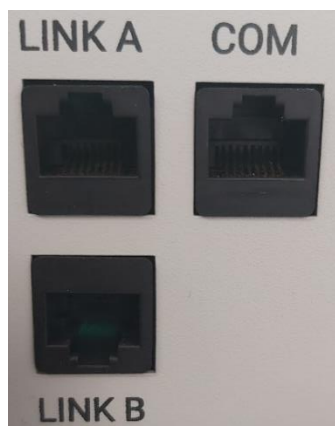
DIP3: 0

DIP4: 1

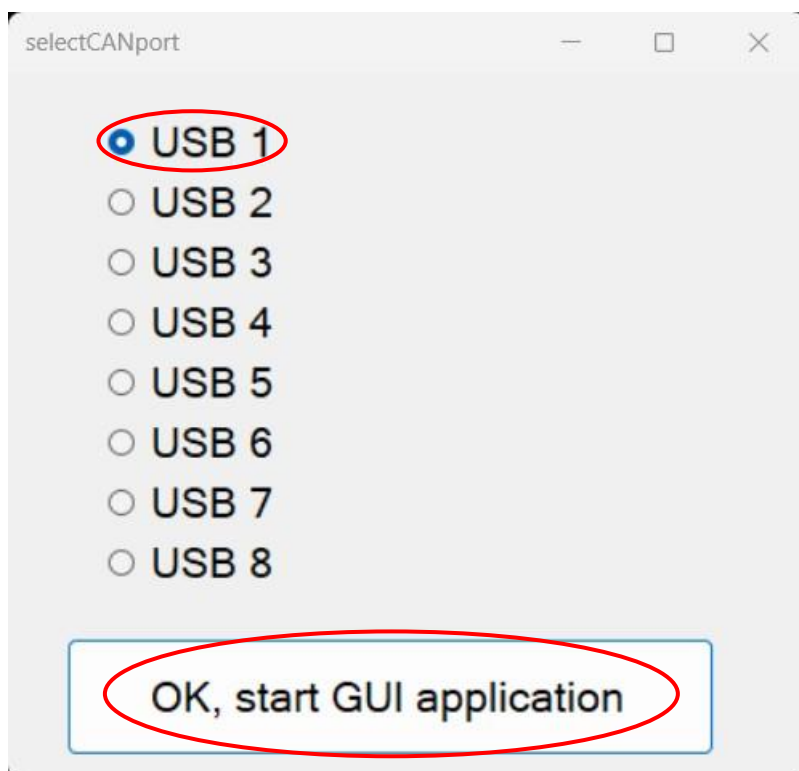


1.4 Connection to the module

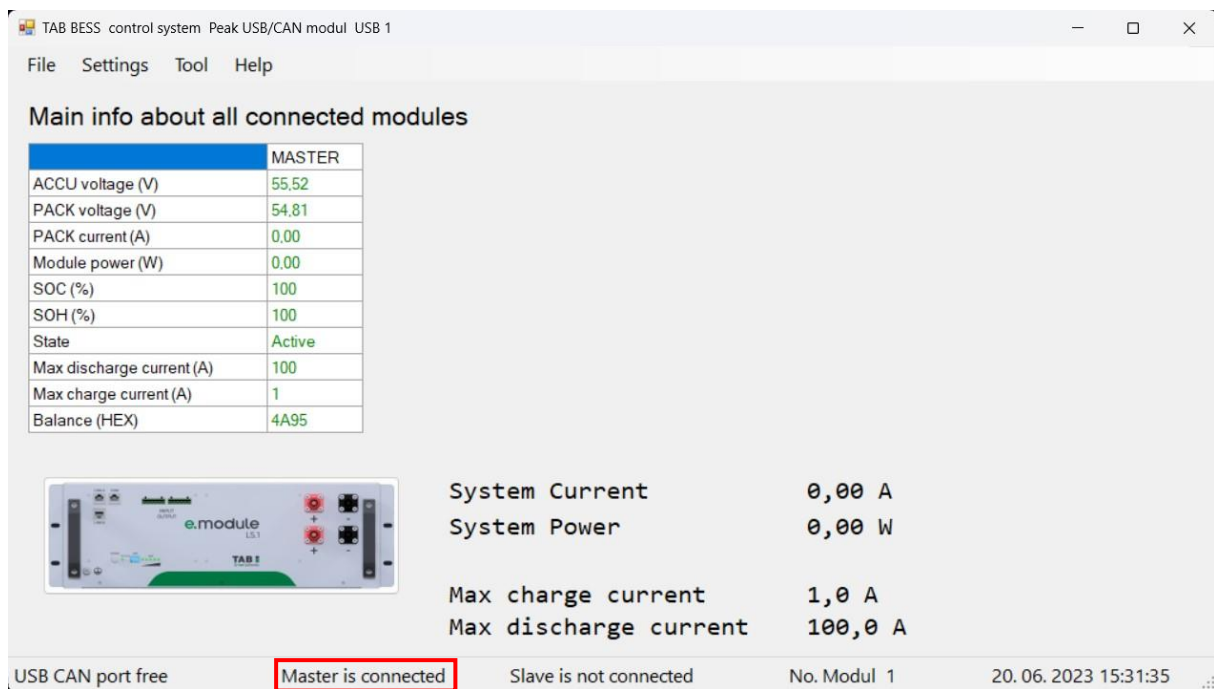
1. Connect the cable to the **LINK A** or **LINK B**.



2. Run the program **TabBmsGui**. A port selection window will appear. Select **[USB 1]** and click **[OK, start GUI application]**.



3. The main window will open.

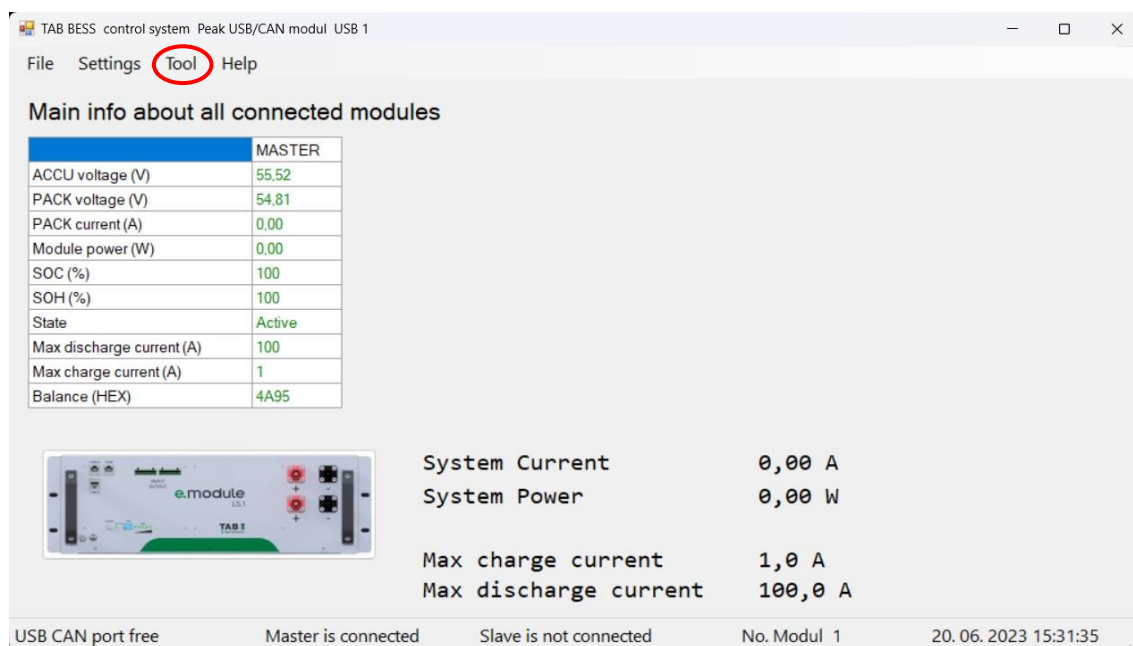


A red square indicates whether you are connected to the module.

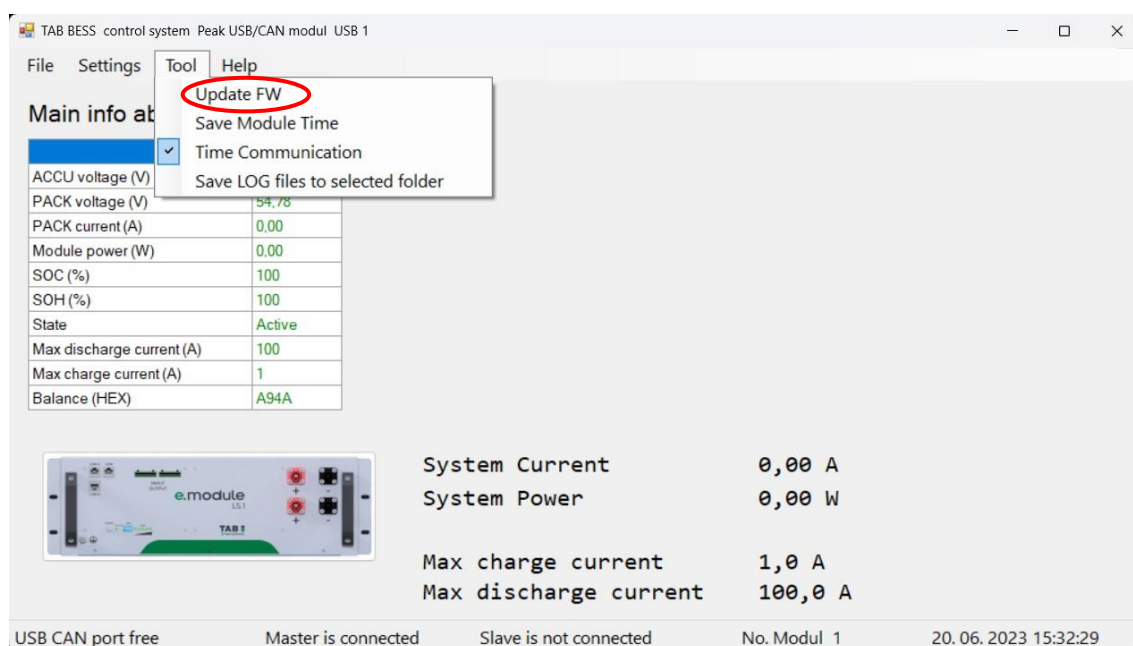
1.5 Executing a firmware update

Once you have successfully connected to the battery, follow the steps below to update the FW.

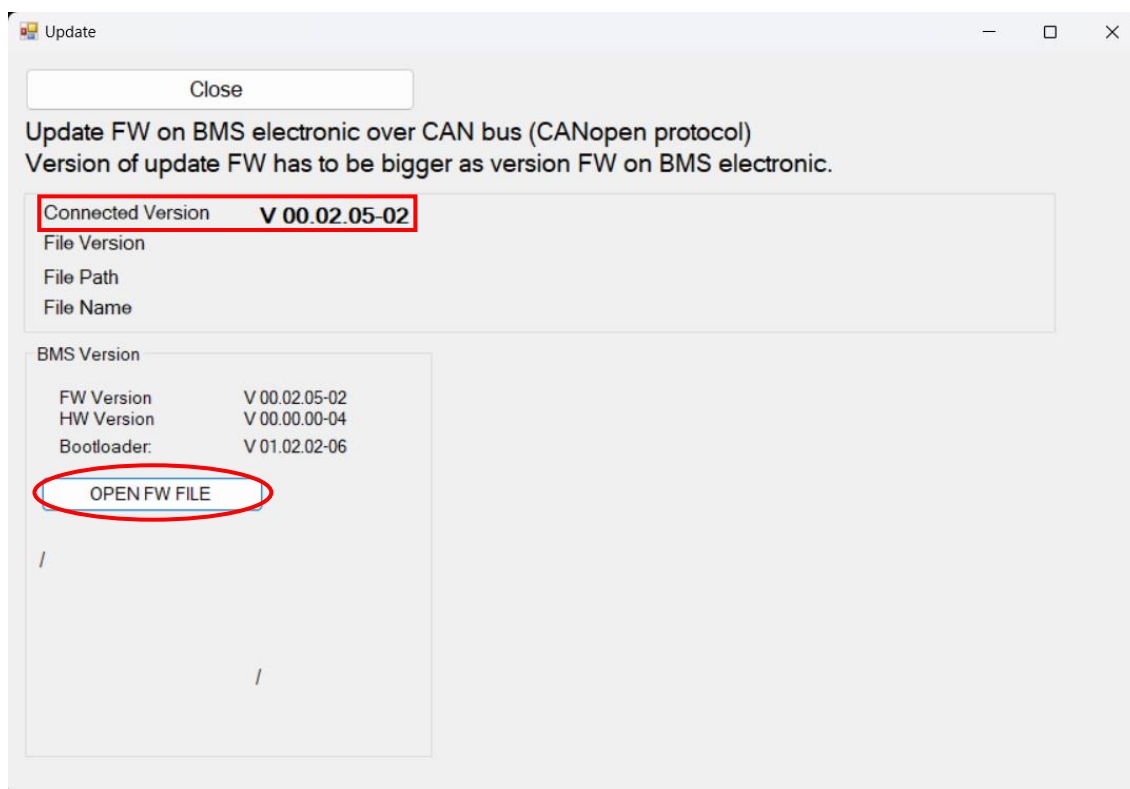
1. Move your mouse to the **[Tool]** tab and click on it.



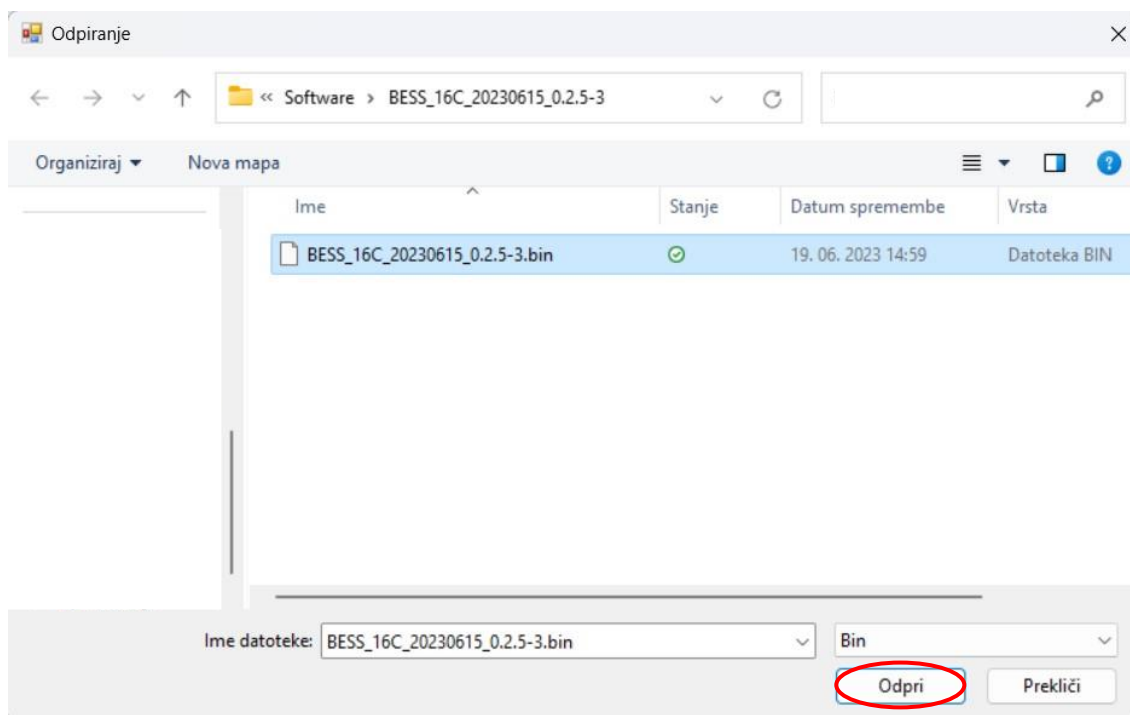
2. Select **[Update FW]**.



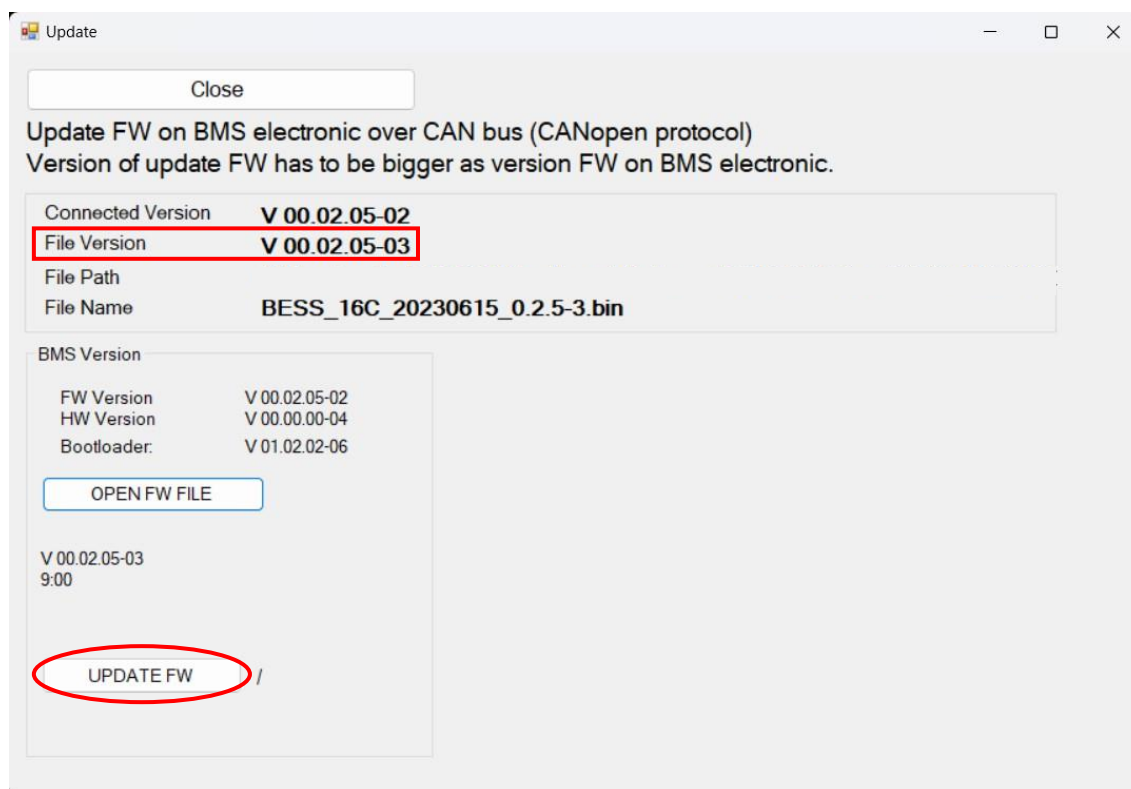
3. Here you can see current FW version (red rectangle). Click **[OPEN FW FILE]**.



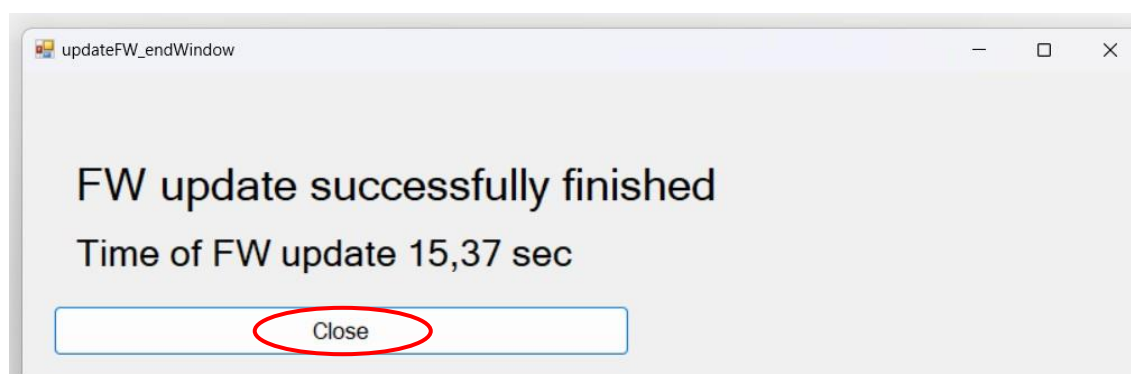
4. Select the firmware you would like to install, then click **[Odpri]**.



5. You can find the version to install here (red rectangle). Click **[UPDATE FW]**.



6. Wait. Updating in process. When it is finished, the next window will appear. Click **[CLOSE]**.



7. The battery will turn off automatically.

8. **Set the DIP switches back to the values they were before.**

9. Reconnect the communication cables.

10. Switch the battery back on.